



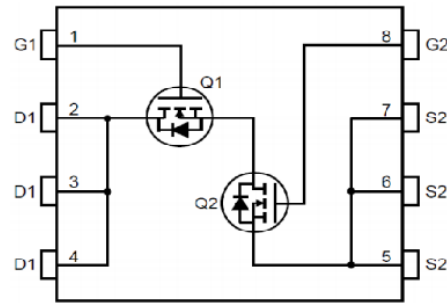
SSC8330GQ4

Dual Asymmetric N-Channel Enhancement Mode MOSFET

➤ **Features**

	VDS	VGS	RDSON Typ.	ID
Q1	30V	±20V	7.4mΩ@10V	33A
			8.1mΩ@4V5	
Q2	30V	±20V	5.5mΩ@10V	35A
			9.5mΩ@4V5	

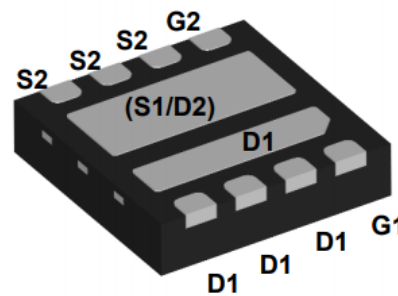
➤ **Pin configuration**



Top View

➤ **Description**

This device uses advanced trench technology to provide excellent RDSON and low gate charge. This device is suitable for use as a load switch or in PWM applications.



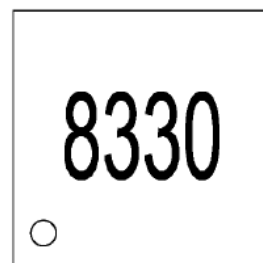
Bottom View

➤ **Applications**

- Isolated DC/DC Converters
- DC/DC conversion in computing
- Load Switch

➤ **Ordering Information**

Device	Package	Shipping
SSC8330GQ4	DFN3X3-8L	5000/Reel



Marking



➤ **Absolute Maximum Ratings** ($T_A=25^{\circ}\text{C}$ unless otherwise noted)

Symbol	Parameter		Ratings		Unit
			Q1	Q2	
V_{DSS}	Drain-to-Source Voltage		30	30	V
V_{GSS}	Gate-to-Source Voltage		± 20	± 20	V
I_D	Continuous Drain Current	$TC=25^{\circ}\text{C}$	33	35	A
		$TC=100^{\circ}\text{C}$	18	20	A
I_{DM}	Pulsed Drain Current ^b		132	144	A
I_{DSM}	Continuous Drain Current ^a	$TA=25^{\circ}\text{C}$	11	12.6	A
		$TA=70^{\circ}\text{C}$	8.3	9.1	A
P_D	Power Dissipation ^c	$TC=25^{\circ}\text{C}$	21	20.1	W
		$TC=100^{\circ}\text{C}$	8.3	8.3	W
P_{DSM}	Power Dissipation ^a	$TA=25^{\circ}\text{C}$	2.3	2.3	W
		$TA=70^{\circ}\text{C}$	1.5	1.5	W
I_{AS}	Avalanche Current		19	25	A
E_{AS}	Avalanche Energy, $L=0.5\text{mH}$		90	156	mJ
T_J	Operation junction temperature		-55 to 150		$^{\circ}\text{C}$
T_{STG}	Storage temperature range		-55 to 150		$^{\circ}\text{C}$

➤ **Thermal Resistance Ratings** ($T_A=25^{\circ}\text{C}$ unless otherwise noted)

Symbol	Parameter	Typical	Maximum		Unit
			Q1	Q2	
$R_{\theta JA}$	Junction-to-Ambient Thermal Resistance ^a		55	55	$^{\circ}\text{C}/\text{W}$
$R_{\theta JC}$	Junction-to-Case Thermal Resistance		6.5	6	

Note:

- a. The value of $R_{\theta JA}$ is measured with the device mounted on 1 in² FR-4 board with 2oz.copper, in a still air environment with $T_A=25^{\circ}\text{C}$. The value in any given application depends on the user's specific board design. The current rating is based on the $t \leq 10\text{s}$ thermal resistance rating.
- b. Repetitive rating, pulse width limited by junction temperature.
- c. The power dissipation P_D is based on $T_{J(\text{MAX})}=150^{\circ}\text{C}$, using junction-to-case thermal resistance, and is more useful in setting the upper dissipation limit for cases where additional heat sinking is used.



➤ **Q1 Electronics Characteristics**($T_A=25^{\circ}\text{C}$ unless otherwise noted)

Symbol	Parameter	Test Conditions	Min	Typ.	Max	Unit
$V_{(BR)DSS}$	Drain-Source Breakdown Voltage	$V_{GS}=0V, I_D=250\mu A$	30			V
$V_{GS(th)}$	Gate Threshold Voltage	$V_{DS}=V_{GS}, I_D=250\mu A$	1	1.65	2.1	V
$R_{DS(on)}$	Drain-Source On- Resistance	$V_{GS}=10V, I_D=15A$		7.4	13	m Ω
		$V_{GS}=4.5V, I_D=12A$		8.1	16	
I_{DSS}	Zero Gate Voltage Drain Current	$V_{DS}=24V, V_{GS}=0V$			1	μA
I_{GSS}	Gate-Source leak current	$V_{GS}=\pm 20V, V_{DS}=0V$			± 100	nA
V_{SD}	Forward Voltage	$V_{GS}=0V, I_S=0.5A$		0.8	1.3	V
G_{FS}	Transconductance	$V_{DS}=15V, I_D=10A$		50		S
C_{iss}	Input Capacitance	$V_{DS}=15V, V_{GS}=0V, f=1MHz$		800		pF
C_{oss}	Output Capacitance			255		
C_{rss}	Reverse Transfer Capacitance			75		
$T_{D(ON)}$	Turn-on delay time	$V_{GS}=10V,$ $V_{DS}=15V, R_G=3\Omega, R_L=2.3\Omega$		15		ns
T_r	Rise time			9		
$T_{D(OFF)}$	Turn-off delay time			55		
T_f	Fall time			16		
Q_g	Total Gate charge	$V_{GS}=10V, V_{DS}=15V, I_D=13A$		17.5		nC
Q_{gs}	Gate to Source charge			2.1		
Q_{gd}	Gate to Drain charge			3		

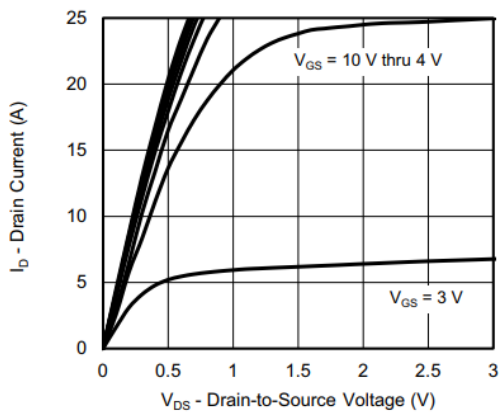


➤ **Q2 Electronics Characteristics**($T_A=25^{\circ}\text{C}$ unless otherwise noted)

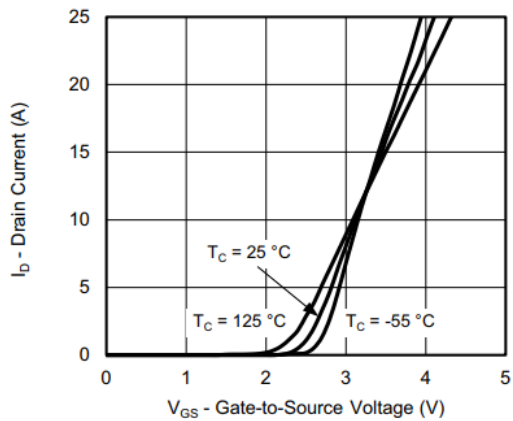
Symbol	Parameter	Test Conditions	Min	Typ.	Max	Unit
$V_{(BR)DSS}$	Drain-Source Breakdown Voltage	$V_{GS}=0V, I_D=250\mu A$	30			V
$V_{GS(th)}$	Gate Threshold Voltage	$V_{DS}=V_{GS}, I_D=250\mu A$	1	1.55	3	V
$R_{DS(on)}$	Drain-Source On- Resistance	$V_{GS}=10V, I_D=15A$		5.5	11	m Ω
		$V_{GS}=4.5V, I_D=12A$		9.5	14	
I_{DSS}	Zero Gate Voltage Drain Current	$V_{DS}=24V, V_{GS}=0V$			1	μA
I_{GSS}	Gate-Source leak current	$V_{GS}=\pm 20V, V_{DS}=0V$			± 100	nA
V_{SD}	Forward Voltage	$V_{GS}=0V, I_S=1A$		0.8	1.5	V
G_{FS}	Transconductance	$V_{DS}=15V, I_D=10A$		60		S
C_{iss}	Input Capacitance	$V_{DS}=15V, V_{GS}=0V, f=1MHz$		1000		pF
C_{oss}	Output Capacitance			269		
C_{rss}	Reverse Transfer Capacitance			105		
$T_{D(ON)}$	Turn-on delay time	$V_{GS}=10V,$ $V_{DS}=15V, R_G=3\Omega, R_L=2.3\Omega$		8		ns
T_r	Rise time			4		
$T_{D(OFF)}$	Turn-off delay time			18		
T_f	Fall time			6		
Q_g	Total Gate charge	$V_{GS}=10V, V_{DS}=15V, I_D=13A$		15		nC
Q_{gs}	Gate to Source charge			2.2		
Q_{gd}	Gate to Drain charge			3.3		



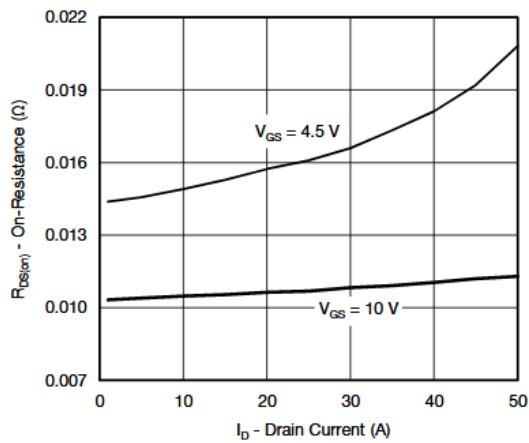
➤ Q1 Typical Characteristics ($T_A=25^\circ\text{C}$ unless otherwise noted)



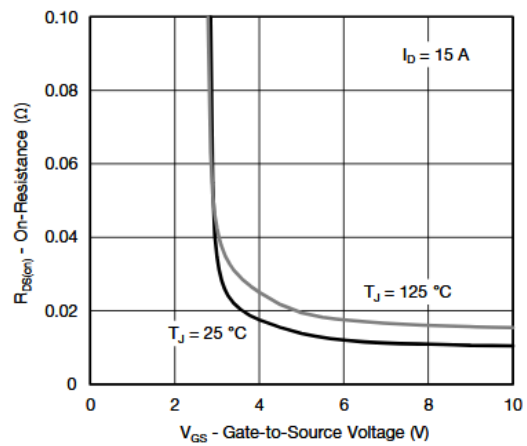
Output Characteristics



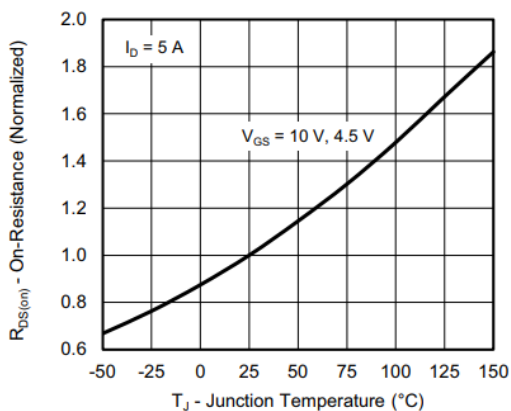
Transfer Characteristics



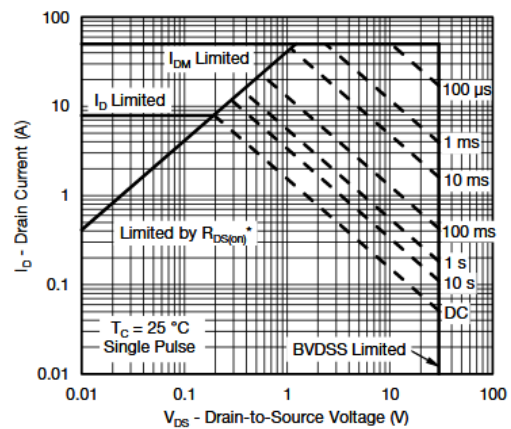
On-Resistance vs. Drain Current and Gate Voltage



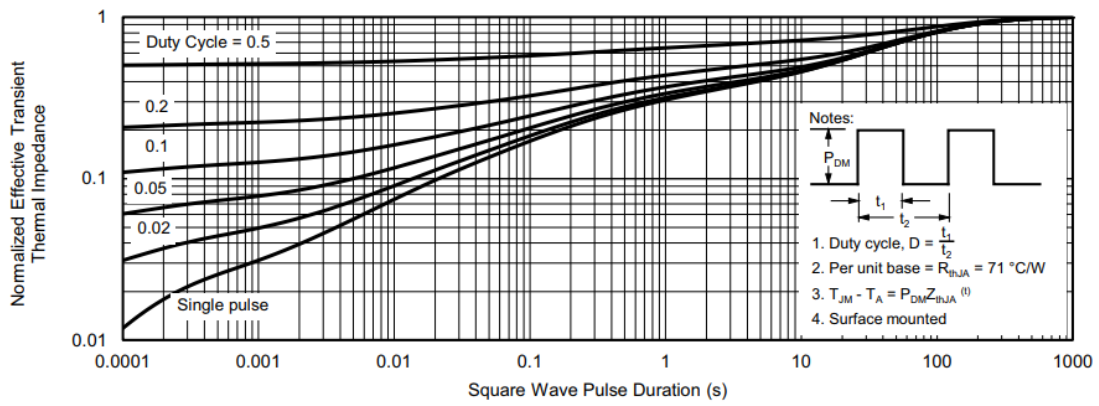
On-Resistance vs. Gate-to-Source Voltage



On-Resistance vs. Junction Temperature



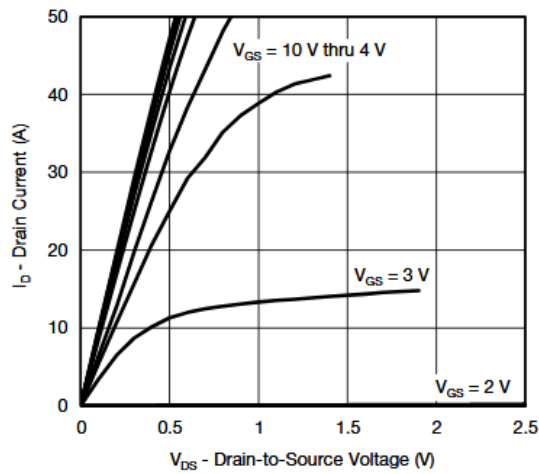
Safe Operating Area, Junction-to-Ambient



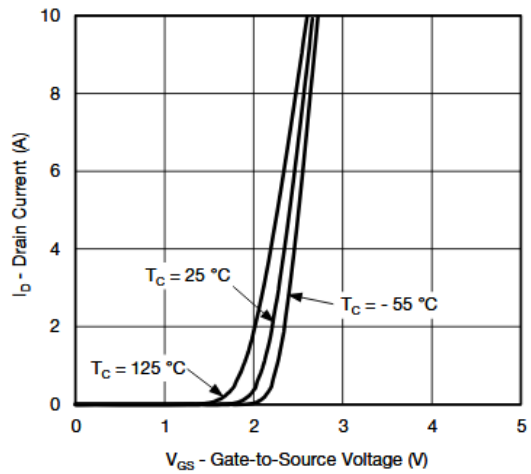
Normalized Thermal Transient Impedance, Junction-to-Ambient



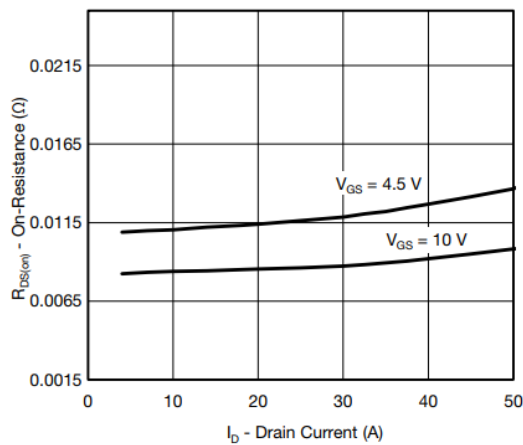
➤ Q2 Typical Characteristics ($T_A=25^\circ\text{C}$ unless otherwise noted)



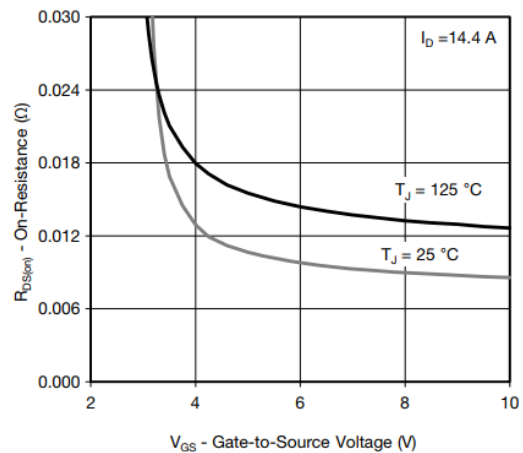
Output Characteristics



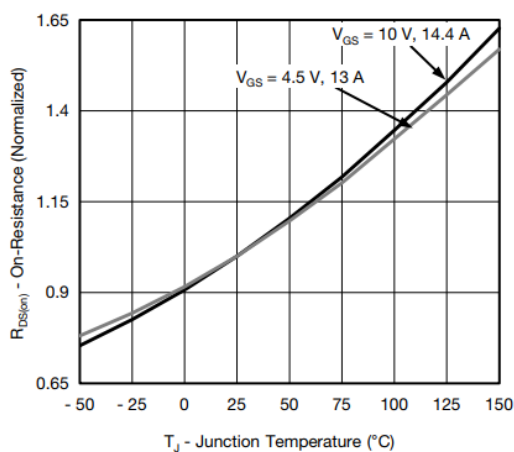
Transfer Characteristics



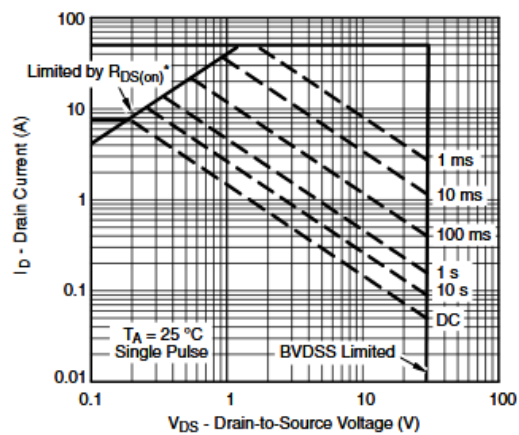
On-Resistance vs. Drain Current



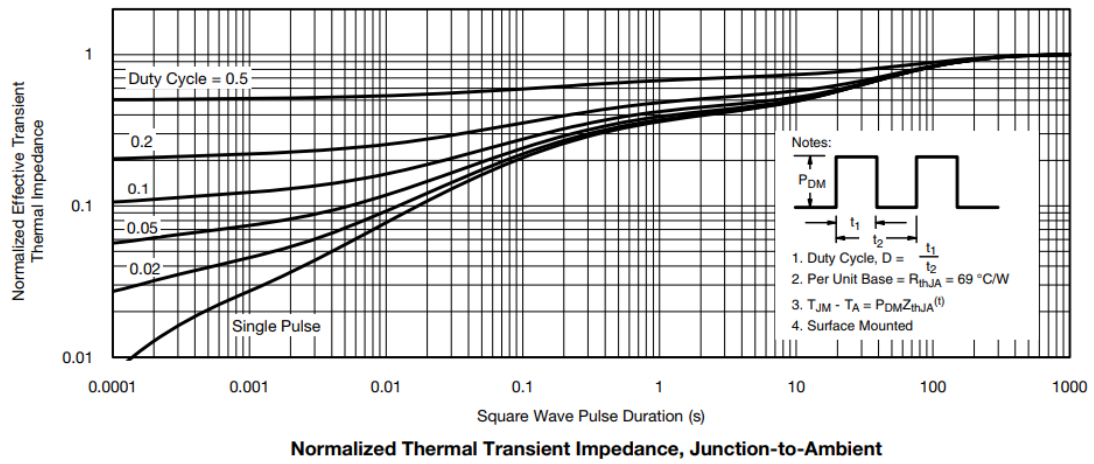
On-Resistance vs. Gate-to-Source Voltage

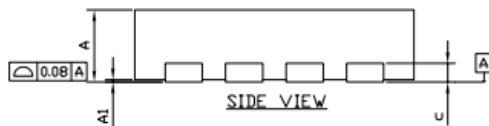
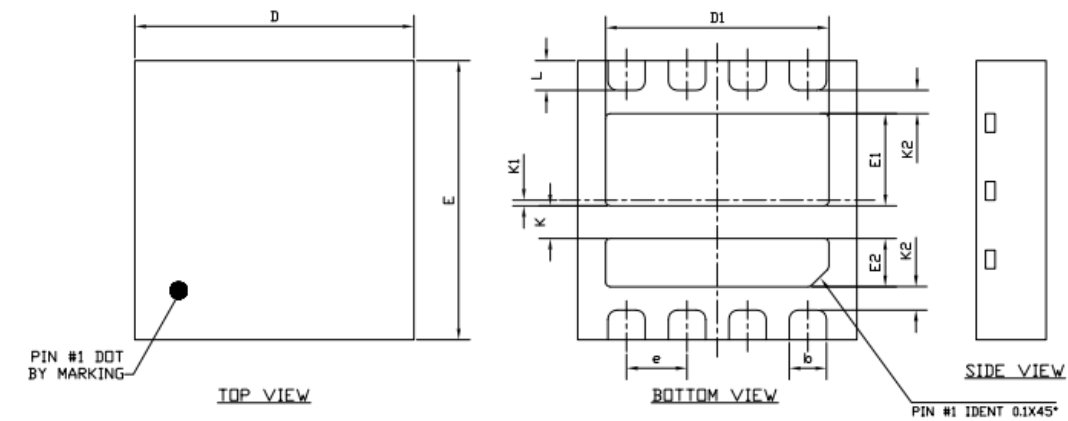


On-Resistance vs. Junction Temperature



Safe Operating Area, Junction-to-Ambient



➤ Package Information

DFN3X3-8L

SYMBOLS	DIMENSIONS IN MILLIMETERS			DIMENSIONS IN INCHES		
	MIN	NOM	MAX	MIN	NOM	MAX
A	0.70	0.75	0.80	0.028	0.030	0.032
A1	0.00	---	0.05	0.000	---	0.002
c	0.203 REF.			0.008 REF.		
b	0.35	0.40	0.45	0.014	0.016	0.018
D	2.90	3.00	3.10	0.114	0.118	0.122
D1	2.30	2.40	2.50	0.090	0.094	0.098
E	2.90	3.00	3.10	0.114	0.118	0.122
E1	0.89	0.99	1.09	0.035	0.039	0.043
E2	0.42	0.52	0.62	0.016	0.020	0.024
e	0.65 BSC			0.026 BSC		
L	0.27	0.32	0.37	0.011	0.013	0.015
K	0.35 REF.			0.014 REF.		
K1	0.06 REF.			0.002 REF.		
K2	0.25 REF.			0.010 REF.		



DISCLAIMER

SSCSEMI RESERVES THE RIGHT TO MAKE CHANGES WITHOUT FURTHER NOTICE TO ANY PRODUCTS HEREIN TO IMPROVE RELIABILITY, FUNCTION OR DESIGN. SSCSEMI DOES NOT ASSUME ANY LIABILITY ARISING OUT OF THE APPLICATION OR USE OF ANY PRODUCT OR CIRCUIT DESCRIBED HEREIN; NEITHER DOES IT CONVEY ANY LICIENCE UNDER ITS PATENT RIGHTS, NOR THE RIGHTS OF OTHERS.

THE GRAPHS PROVIDED IN THIS DOCUMENT ARE STATISTICAL SUMMARIES BASED ON A LIMITED NUMBER OF SAMPLES AND ARE PROVIDED FOR INFORMATIONAL PURPOSE ONLY. THE PERFORMANCE CHARACTERISTICS LISTED IN THEM ARE NOT TESTED OR GUARANTEED. IN SOME GRAPHS, THE DATA PRESENTED MAY BE OUTSIDE THE SPECIFIED OPERATING RANGE (E.G. OUTSIDE SPECIFIED POWER SUPPLY RANGE) AND THEREFORE OUTSIDE THE WARRANTED RANGE.

OUR PRODUCT SPECIFICATIONS ARE ONLY VALID IF OBTAINED THROUGH THE COMPANY'S OFFICIAL WEBSITE, CRM SYSTEM, OR OUR SALES PERSONNEL CHANNELS. IF CHANGES OR SPECIAL VERSIONS ARE INVOLVED, THEY MUST BE STAMPED WITH A QUALITY SEAL AND MARKED WITH A SPECIAL VERSION NUMBER TO BE VALID.